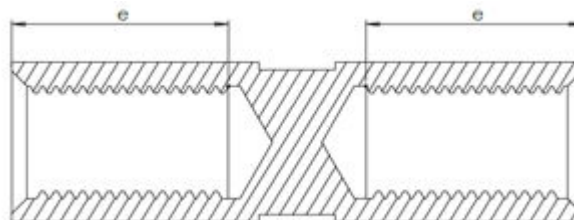


Connecting Sleeve B4000-5 Pc-Coat™



Connecting sleeve for extending ceiling bolts to concrete elements. The connecting sleeve is screwed into the downward protruding rebar bolt or threaded pin from watertight bolt insertion. Well tightened using a key on the key grip of the sleeve.

Threaded Round sleeve for connection of threaded bolts with Pc-Coat™ (HDG and epoxy powder coat) in grade 5.8 and below according to ISO 898-1. Threads are oversized to secure correct fit.

Stock programme:

M33x150

Technical information:

Minimum yield strength 660 MPa with tension area of 567,8 mm².

Recommended minimum thread engagement to achieve full load ability: 1,5 x Ø rod.

Dimension	Outer dimension (Ø mm)	Length (mm)	Thread engagement e (mm)	Weight (kg /pc)	Key grip (mm)
M33x150	42	150	50	0,88	38

Corrosion protection/ Pc-Coat™

Hot-dip galvanization is carried out in compliance with NS-EN-ISO 1461 and epoxy powder coating in compliance with NS-EN 13438. With regard to coating thickness and further information, please see Document Q/PTC-T19A – Specification for Pc-Coat – SVV/JBV. Please also refer to the Pc-Coat Product Data Sheet and accompanying FDV documentation.

Accessories:

Threaded bolts with Pc-Coat™.

Thread sealant or counter nut can be used for locking.