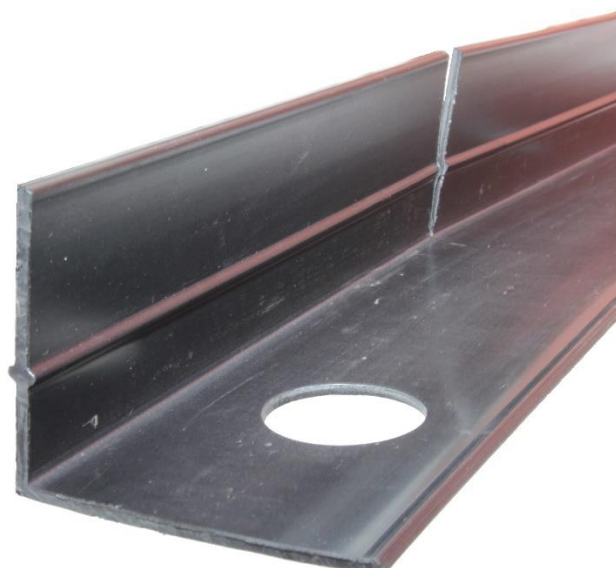


Tear indicator 70x70



Description:

Plastic angle screws into PE-foam to provide a guide to shrinkage in the concrete.

One side of the angle is regularly split to installation on curved surfaces without deforming the plastic.

Between the tear indicator and PE-foam, a sheet is laid as per specifications. The sheet or other covering must not be so thick that it prevents the clamp screws (L=35mm) from gripping properly. There are 11 holes, each with a diameter of 35 mm, evenly distributed along the side.

Technical information:

Tear indicator: HDPE

Color: black

Stock programme:

70x70x3000 mm

Accessories:

Clamp screw L=35 mm

Fiber cloth/fire protection cloth